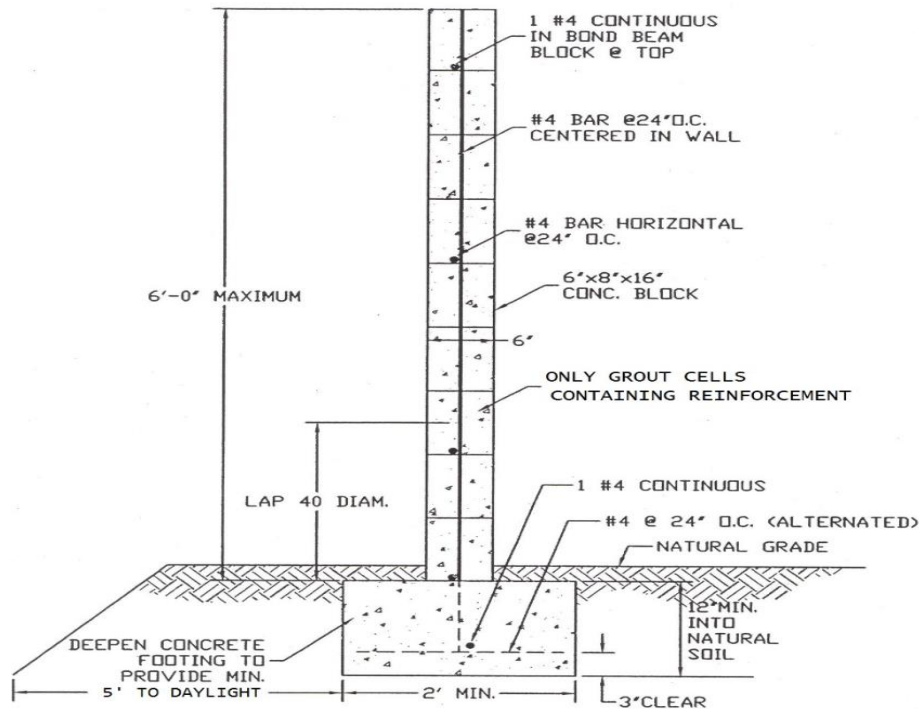




Freestanding 6' Block Wall/Fence 6" Block (Non-Retaining)

BI-7



NOTES:

1. Masonry units shall be grade A conforming to ASTM C90 and manufactured in accordance with concrete masonry association standards.
2. Portland Cement concrete shall conform to ASTM C150
3. Concrete shall have a minimum strength of 4,500 psi at 28 days (no Deputy Inspection required).
4. Mortar shall be freshly prepared and uniformly mixed in a ratio of 1 part cement, $\frac{1}{2}$ part lime putty, 4 $\frac{1}{2}$ parts sand and shall conform to ASTM C270. If plastic type cement is used, the lime putty shall be omitted.
5. Grout shall be of fluid consistency, Ratio by volumes 1 part cement, 3 parts sand or 1 part cement, 3 parts sand and 2 parts pea gravel.
6. Reinforcing steel shall be deformed bars conforming to ASTM A615 grade 40.
7. No sections of the wall may be within 3 feet of any fire hydrant, post indicator valve and/or Fire Department connection areas.

City of San Clemente, Building Division, 910 Calle Negocio, Suite 100, San Clemente, CA 92673
Phone (949) 361-6100 Fax (949) 361-8281 - www.san-clemente.org