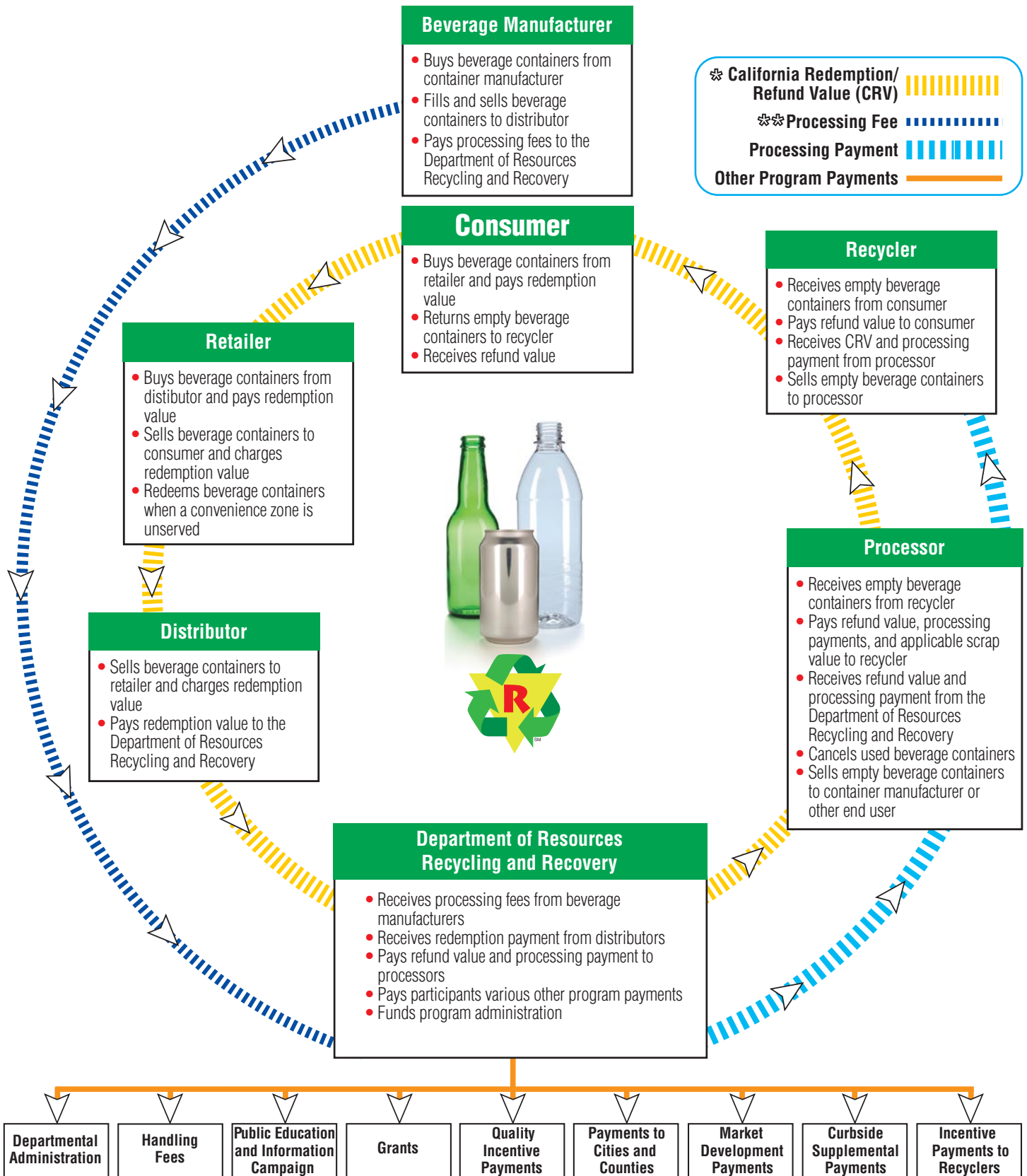
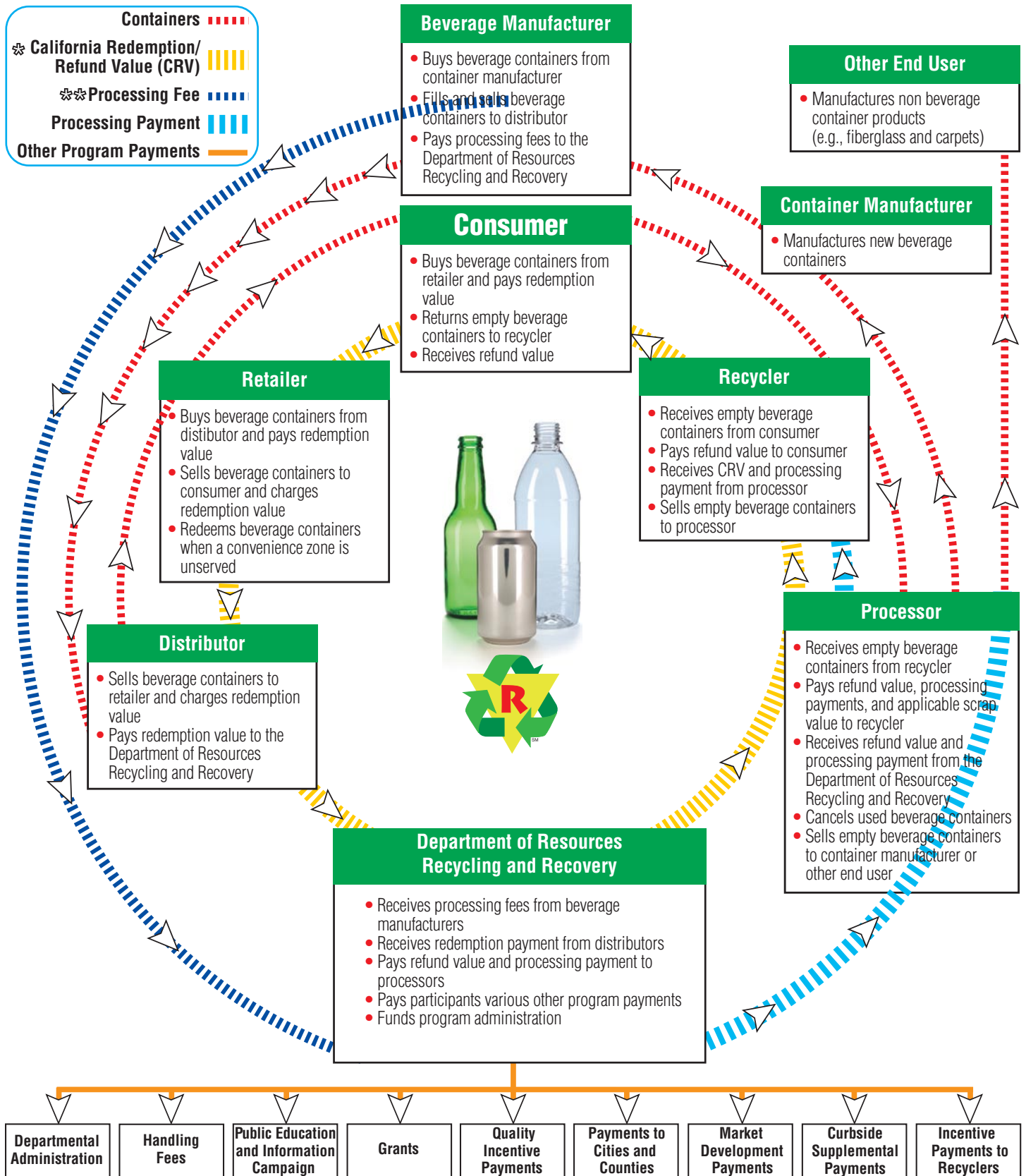


## Flow of Payments under the Beverage Container Recycling Program



**NOTES:** ❄ California Redemption Value is paid when a beverage container is purchased. California Refund Value is received when a beverage container is returned for recycling. CRV is used to reference both terms.  
 ❄❄ Processing payments are paid to recyclers equaling the difference between the average cost to recycle and the average scrap value received. Processing fees are equal to a percentage of processing payments ranging from 10 to 65 percent.



**NOTES:** California Redemption Value is paid when a beverage container is purchased. California Refund Value is received when a beverage container is returned for recycling. CRV is used to reference both terms.

Processing payments are paid to recyclers equaling the difference between the average cost to recycle and the average scrap value received. Processing fees are equal to a percentage of processing payments ranging from 10 to 65 percent.