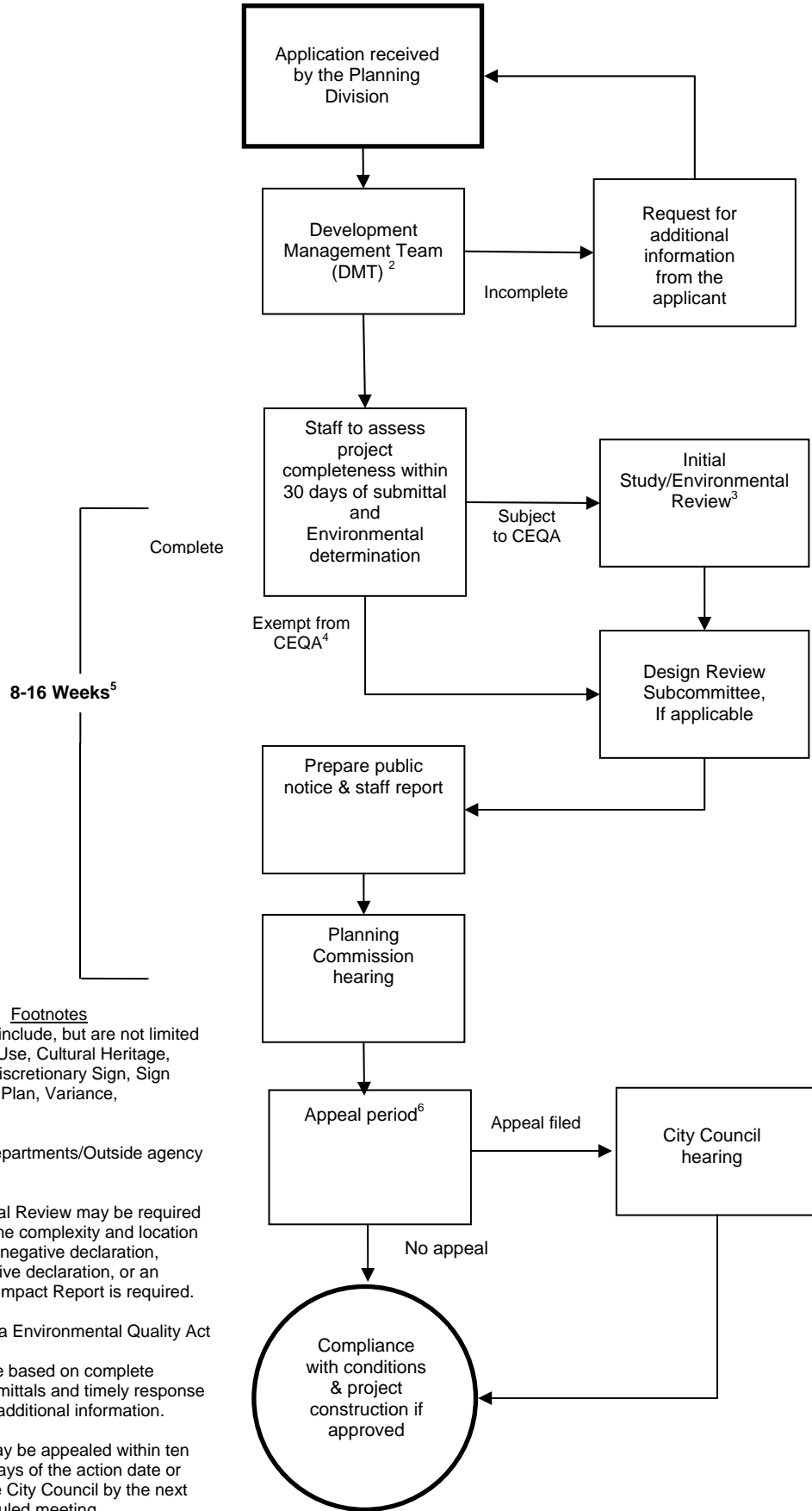


Planning Commission Review Process Flowchart¹



Footnotes

1. Applications include, but are not limited to: Conditional Use, Cultural Heritage, Architectural, Discretionary Sign, Sign Exception, Site Plan, Variance, Interpretations.
2. Other City departments/Outside agency review
3. Environmental Review may be required depending on the complexity and location of the project a negative declaration, mitigated negative declaration, or an Environmental Impact Report is required.
4. The California Environmental Quality Act
5. Timelines are based on complete application submittals and timely response to requests for additional information.
6. Decisions may be appealed within ten (10) calendar days of the action date or called up by the City Council by the next regularly scheduled meeting.